





King George Road, Ware, SG12 7DT

Westwood Leber are delighted to bring to the market this well-presented three-bedroom semi-detached family home, perfectly positioned on this residential road in Ware close to the town centre. This fantastic property offers generous living accommodation throughout and presents an excellent opportunity for those looking to secure a spacious home within walking distance to Ware's vibrant town centre and railway station.

The ground floor comprises a bright and beautifully sized living room measuring 14'6 x 14'11, offering an inviting space for family gatherings and relaxation. To the rear sits a modern fitted kitchen with ample worktop and storage space, providing direct access out to the garden—ideal for outdoor dining and entertaining.

To the first floor, the home offers three well-proportioned bedrooms, including a spacious principal bedroom and two further excellent bedrooms, well suited for children, guests or home office use. The property is further served by a contemporary family bathroom.

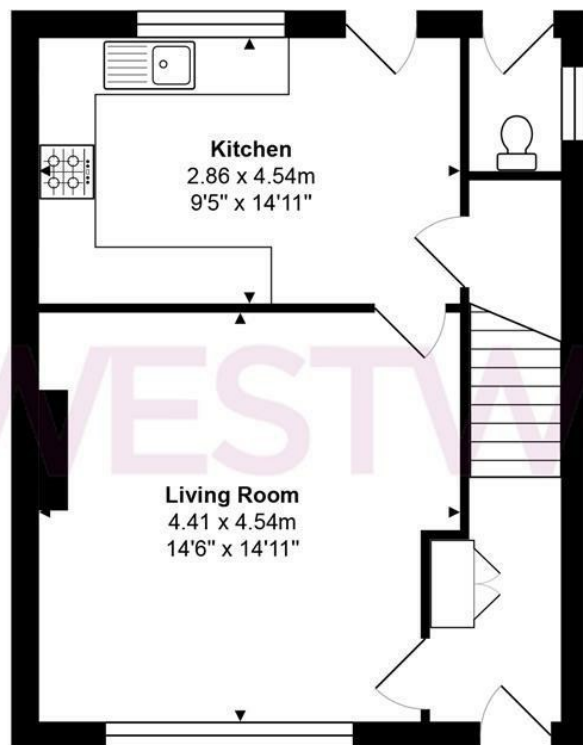
Externally, this home benefits from a private rear garden offering great potential for landscaping or future extension, subject to planning permission. Additional advantages include side access and desirable semi-detached positioning allowing excellent natural light throughout.

Ideally located, King George Road is just a short walk from Ware's array of shops, restaurants and leisure facilities, along with Ware mainline station providing fast and direct links into London Liverpool Street. The area is also renowned for excellent local schooling options and attractive green spaces. An early viewing is highly recommended to appreciate the space, finish and superb location this property has to offer!

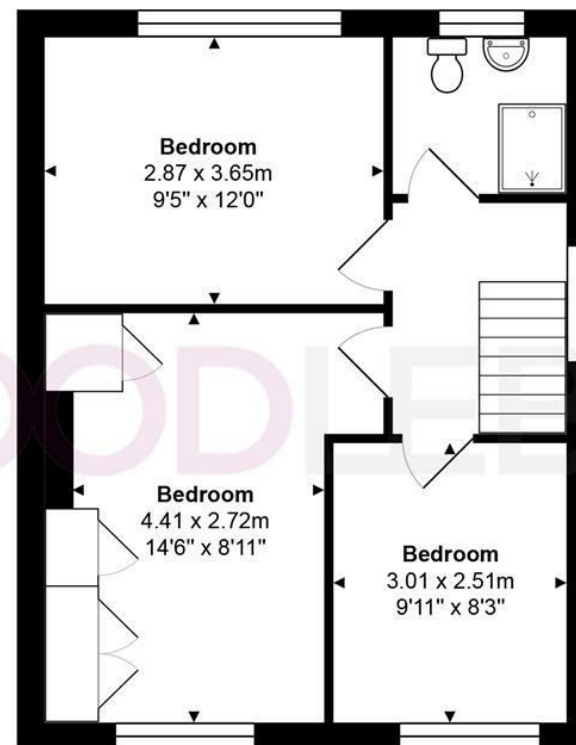


WESTWOODLEBER

WESTWOODLEBER
LET US GUIDE YOU HOME



Ground Floor



First Floor

Total Area: approx. 83.0 m² ... 894 ft²

THE FLOORPLAN IS FOR ILLUSTRATIVE PURPOSES ONLY AND IS NOT TO SCALE.
Measurements and features are approximate and may differ from the actual property. Verify all details independently; no liability is accepted for errors or omissions.

Property marketing provided by www.fotomarketing.co.uk



